



Broadhurst Gardens NW6

Parkheath  
*Sold on Service*



JRST  
5 NW6

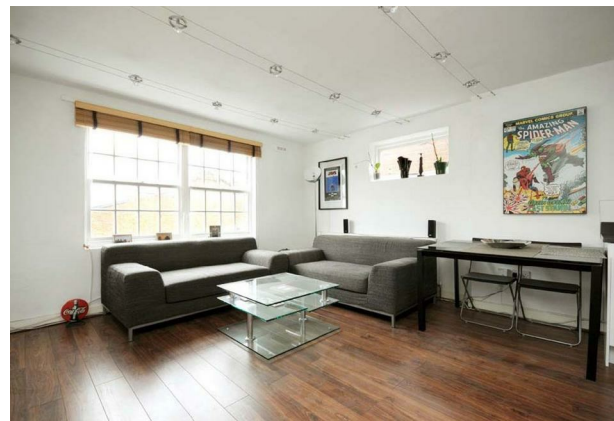
P  
Blue  
24

24



## Broadhurst Gardens, NW6 £460,000 Share of Freehold

- Well proportioned 1 bedroom apartment
- 484 sq ft / 45 sq m
- Spacious 21' open plan reception/kitchen
- Set on the second floor (top) within beautiful detached house
- Double bedroom with walk-in wardrobe
- South Hampstead conservation area location
- Very convenient location, short walk to Finchley road station (Metropolitan and Jubilee lines)
- Ideal first time purchase or investment property
- Chain free sale
- EPC: Rating D, Council Tax: Camden band D



**Parkheath**  
*Sold on Service*

**Camden Tax band D**

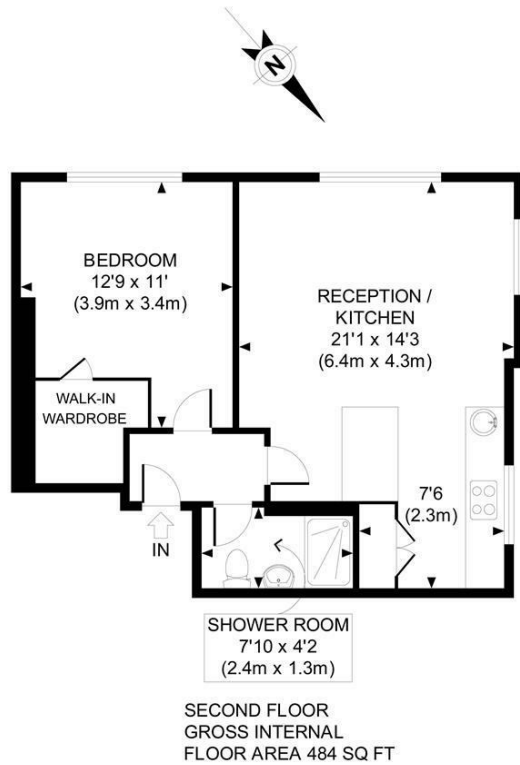
Belsize Park/Hampstead  
208 Haverstock Hill  
NW3 2AG  
Sales 020 7431 1234  
Lettings 020 7431 3104  
[nw3@parkheath.com](mailto:nw3@parkheath.com)

South/West Hampstead  
192 West End Lane  
NW6 1SG  
Sales & Lettings  
Tel 020 7794 7111  
[192@parkheath.com](mailto:192@parkheath.com)

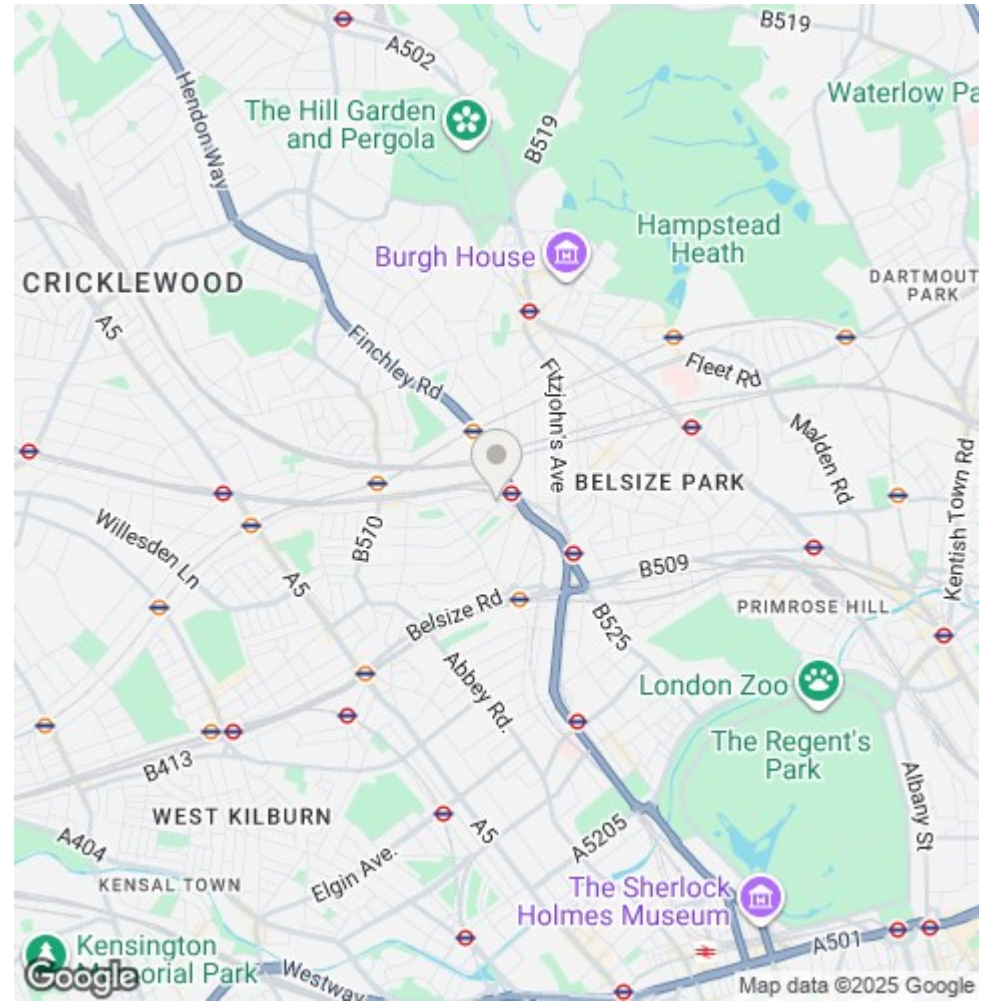
Kensal Rise  
54-56 Chamberlayne Rd  
NW10 3JH  
Tel 020 8960 4845  
[kensal@parkheath.com](mailto:kensal@parkheath.com)

Property Management  
192 West End Lane  
NW6 1SG  
020 7433 6174  
[pm@parkheath.com](mailto:pm@parkheath.com)

[www.parkheath.com](http://www.parkheath.com)



APPROX. GROSS INTERNAL FLOOR AREA 484 SQ FT / 45 SQ M  
 Ref: PARKHEATH WH - 180112 Copyright [photoplan.co.uk](http://photoplan.co.uk)  
 Floorplans are for identification and guideline purposes only, not to scale.  
 Compliant with RICS code of measuring practice.



The particulars do not constitute part of an offer or contract. The particulars, including text, photographs and plans, are for the guidance only of prospective purchasers/tenants and must not be relied upon as statements of fact. The descriptions provided therein represent the opinion of the author and whilst given in good faith should not be construed as statements of fact. Nothing in these particulars shall be deemed a statement that the property is in good condition or otherwise or that any services or facilities are in good working order. All measurements are approximate